

2018 CFISD Livestock Show

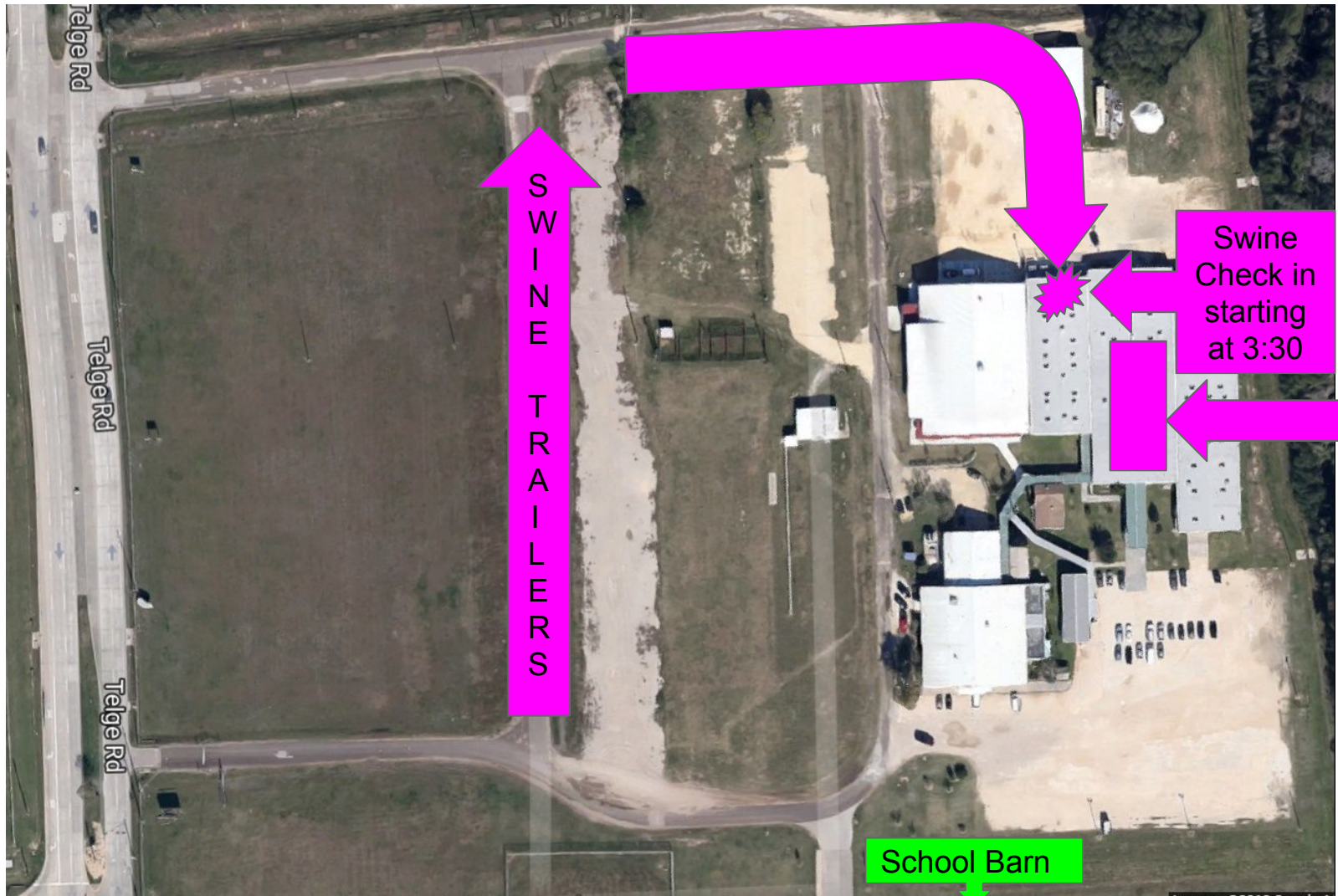


Wednesday, February 7th

Transporting your animal to the show is your responsibility.

Check in times -

- **Swine** - 3:30pm -8pm
 - There will be at least 3 trailers moving pigs.
 - They will travel back and forth until all pigs have been transported.
 - You will need to be at the barn in your pen, as soon as school is out.
 - You will wait until there is a free trailer, unless you have your own.
- **Steers** - Move in at 3:30pm, weigh in is 5:30pm - 8pm
- **Lamb/Goats** - Move in at 3:30pm, weigh in is 5:30pm - 8pm
 - Goats and lambs can be put in the back of trucks in cages
 - If needed the goats and lambs can be walked across the parking lot

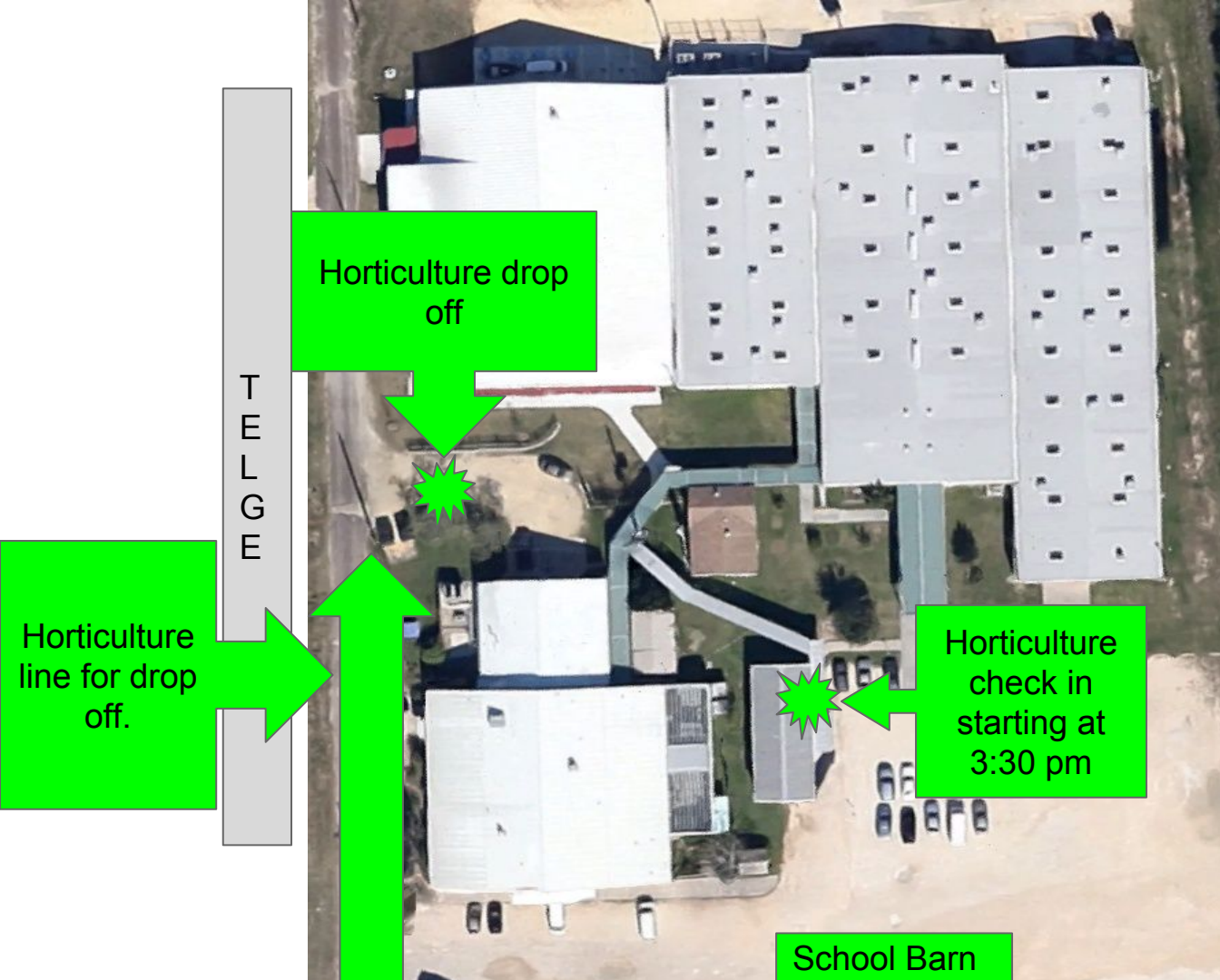


SWINE TRAILERS

Swine Check in starting at 3:30

Swine pens located here

School Barn



Horticulture drop
off

T
E
L
L
G
E

Horticulture
line for drop
off.

Horticulture
check in
starting at
3:30 pm

School Barn

T
E
L
G
E

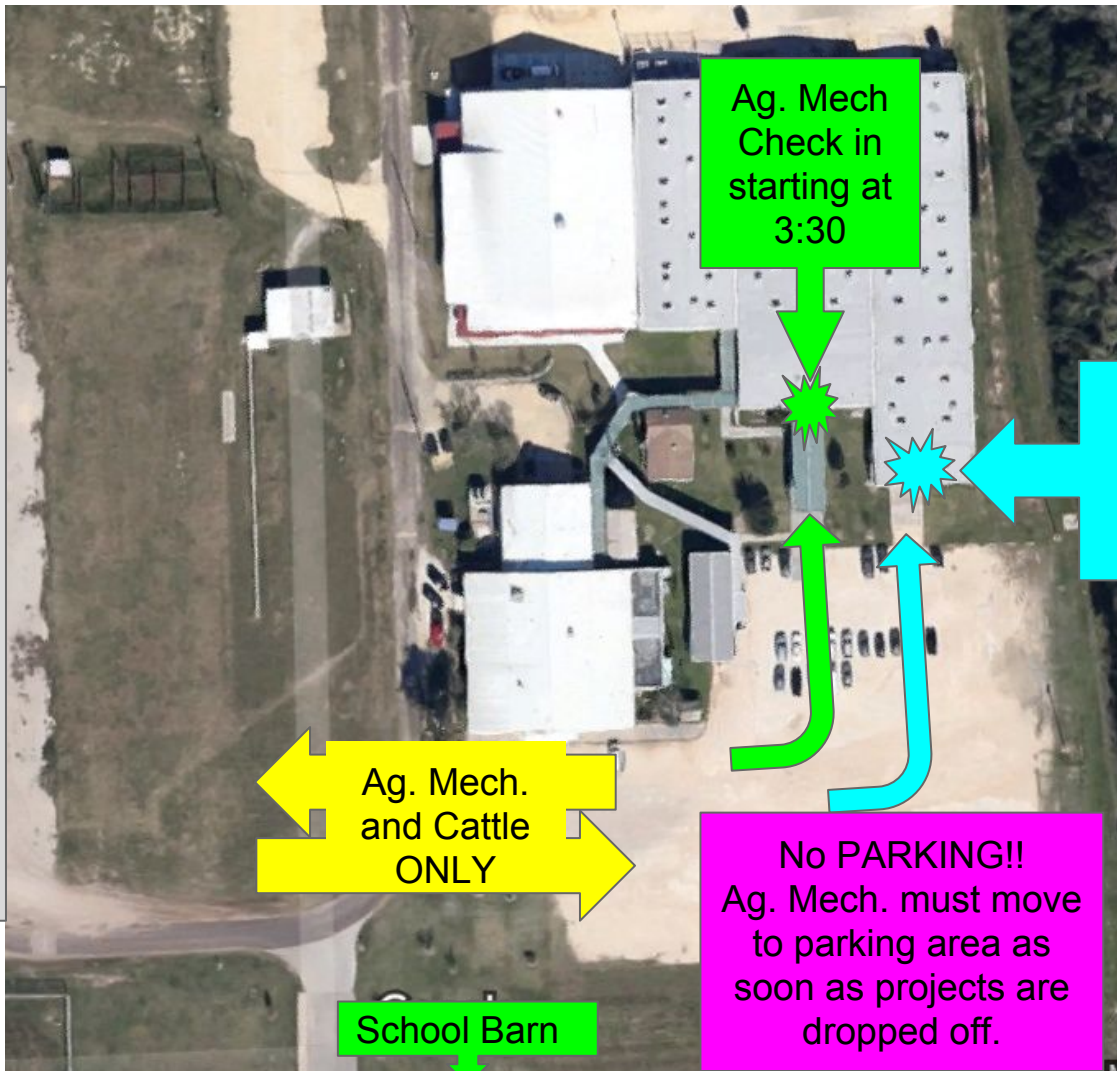
Ag. Mech
Check in
starting at
3:30

Cattle
Drop
Off

Ag. Mech.
and Cattle
ONLY

No PARKING!!
Ag. Mech. must move
to parking area as
soon as projects are
dropped off.

School Barn



T
E
L
G
E



Lamb
Check in
starting at
5:30

Goat
Check in
starting at
5:30

Steer
Check in
starting at
5:30

No PARKING!!
Ag. Mech. must move
to parking area as
soon as projects are
dropped off.

School Barn

What do I bring with me ??

Everyone - Show Official Dress on the day you show.

******If you need to borrow a FFA jacket sign up on the list after this meeting**

- Homework you have from missing school for show
- Safety Pins

Poultry - Half Cups or half water bottles, for water/feed containers.

- Bring feed in daily portions

Market Rabbits - Feeders

- Waterers
- Wire to hang them with

What do I bring with me ??

Swine

- Hog wire to hang feeder on
- Feeder
- Pipe Waterer
- Bring your feed in daily portions.
- Show day - shampoo
- Towel to dry with
- Whip
- Brush
- Water Sprayer
- Paper towels
- **Zip ties**

What do I bring with me??

Goat/Lamb

- Hog wire to hang feeder on
- Water bucket
- Towel
- Shampoo - the day of show
- Halter- for washing
- Show chain
- Brush
- Daily portion of feed and hay
- Muzzle
- Blanket

What do I need to bring with me?

Steers/ Heifers

- Towels/shammee to dry
- Hay bag
- Water bucket
- Feeder
- Wire to hang with
- Necktie, to tie calf up at night
- Halter
- Show Halter
- Show Stick
- Manure Fork
- Comb for switch
- Brush for body

Things you may **NOT** bring with you to the show.

- Lawn chairs - if these are seen at the show they will be confiscated
- Ice chest
- All of your animal's food at once
- Show box
- Fans
- Trim chutes

Wednesday, February 7th

3:30 PM - Barn opens - Lambs, goats, and steers move in

- Swine check in begins, Horti. and Ag. Mech. check in begins.

****Horticulture and Ag. Mechanics projects that are selling must set a beginning bid at check in.****

5:30 PM - Lamb, Goat, Steer check in begins.

If you have more than one project to check in you may have your parents check in you projects.

You must bring your presale and donation forms with you.

8:00 PM - All projects **must** be checked in.

(lambs, goats, swine, steers, heifers, steers, ag. mech., horticulture)

Rules for students during show:

- Students **may not exit** the exhibit center between the times of **7:20 AM - 2:40 PM**, on **Thursday and Friday**
- **Students must check into an Ag. Teacher by 7:20 AM both mornings or the student will be counted absent.**
- The booster club will be purchasing lunch for all students on Thursday and Friday.

Rules for students during show:

- Student must follow the school's code of conduct. A student and their project can be and will be removed from the show for any misconduct. None of the following will be tolerated including, but not limited to: disrespect, profanity, use of tobacco products, insubordination, excessive horseplay, etc
- When student are not in show official dress students must be wearing clothes that are on the school approved dress code.

Thursday, February 8th
Students with the following projects will
be on the field trip list for

- Swine
- Steer
- Heifer
- Ag. Mechanics
- Horticulture
- Goat
- Lamb
- Poultry

Thursday, February 8th

6 AM - Barn opens

- Poultry Check in begins

7:20 AM - Every student on the field trip list must check in with an Ag. Teacher.

****** Ag. Teachers will be located at the poultry check in table.******

7:30 AM - All poultry must be checked in

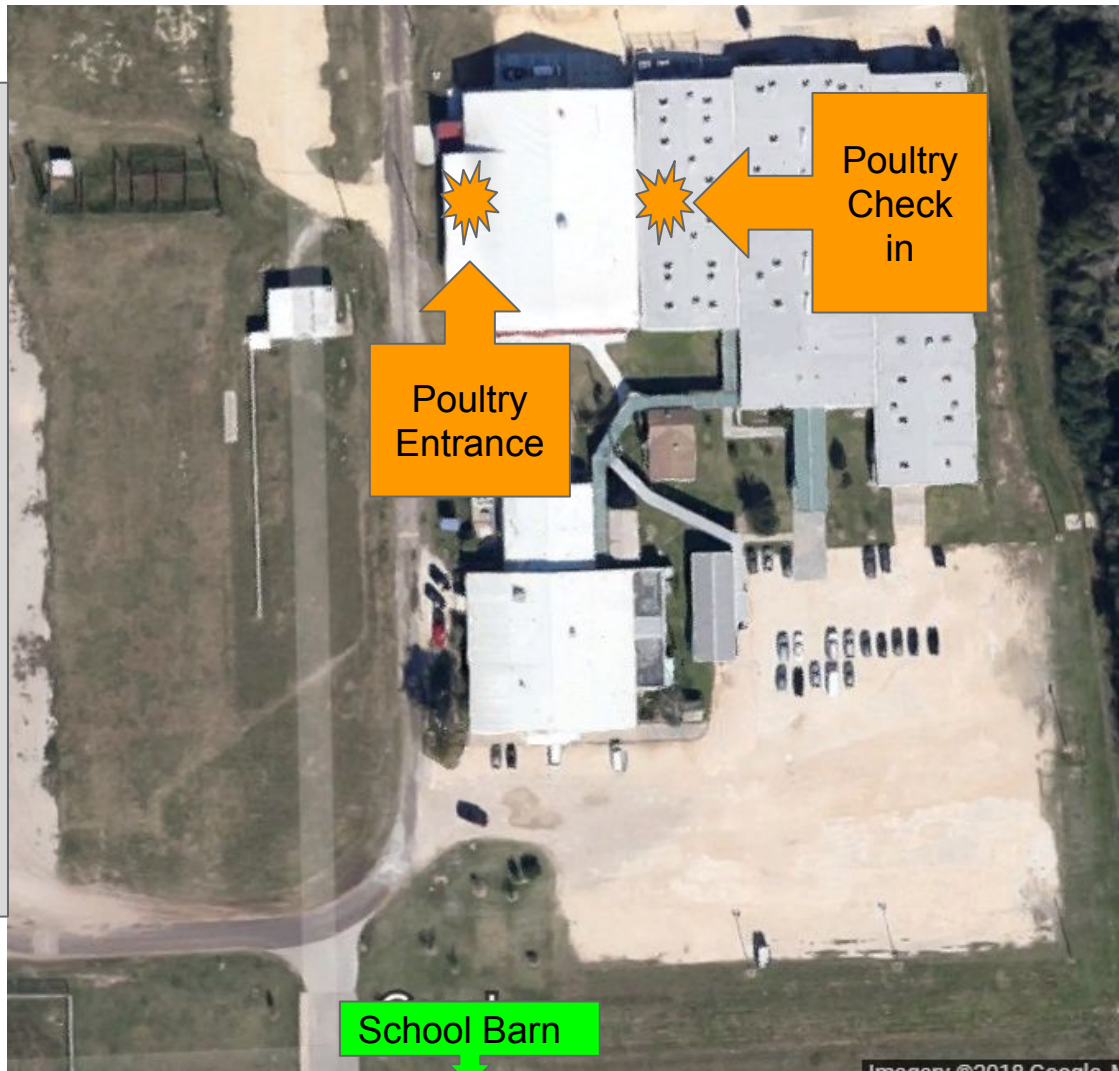
8 AM - Broiler show, followed by Turkey Show

-Judging of Ag. Mechanics and Horticulture Projects

*******Parents of students showing broilers must stay until the all clear is given
for drug testing.**

*******Parents of students showing turkeys must stay until the all clear is given
for drug testing.**

T
E
L
G
E



Poultry
Entrance

Poultry
Check
in

School Barn

Thursday, February 8th

All **Ag. Mechanic and Horticulture Projects** may be removed at the conclusion of judging, **if they are not being sold in the silent auction**, with the exception of the Grand and Reserve Grand Champions who stay on display until after the sale Saturday.

If you are not selling your project, you must first get a yellow release form from your Ag. Teacher BEFORE you can remove your project.

These will be issued after the last show of the day(heifers).

Thursday, February 8th

10 AM - Goat Show

*******Parents of students showing goats must stay until the all clear is given
for drug testing.**

1 PM - Lamb show

*******Parents of students showing lambs must stay until the all clear is given
for drug testing.**

2:40 PM - Students may leave the Exhibit Center

3 PM - Steer Show, followed by Heifer Show

*******Parents of students showing steers and heifers must stay until the all
clear is given for drug testing.**

*****30 minutes after conclusion of the heifer show the barns close.**

Make sure your animal is fed BEFORE this time!

Lambs/goats/poultry not selling or buyer

■

If you are not selling your project, you must first get a yellow release form from your Ag. Teacher BEFORE you can remove your project.

These will be issued after the last show of the day(heifers).

Students with the following projects will be on the field trip list for Friday, February 9th

- Swine
- Breeding Rabbit
- Market Rabbits
- Heifer
- Steer
- Goat
- Lamb
- Poultry

Friday, February 9th

6:00 AM - Barn Opens

- Market Rabbit and Breeding Rabbit Check in begins
- ***If rabbits are sifted they must be removed from the show grounds immediately***

7:20 AM - Every student on the field trip list must check in with an Ag. Teacher.

******* Ag. Teachers will be located around the exhibit center. *******

7:30 AM - All rabbit must be checked in or in process of being checked in
by this time

8:00 AM - Market Rabbit Show, followed by the Breeding Rabbit Show

*******Parents of students showing Rabbits must stay until the all clear is given
for drug testing.**

T
E
L
G
E

Rabbit
Check in
(White Tent)



School Barn

Friday, February 9th

11 AM - Swine Show

*******Parents of students showing pigs must stay until the all clear is given for drug testing.**

2:40 PM - Students may leave the exhibit center.

*******Barn will close 30 minutes after the conclusion of the swine show.*******

Make sure to feed your animal BEFORE this time!

Saturday, February 10th

7 AM - Barn opens

7 AM - 9 AM - Group picture, in official dress. Time will be sent out through remind.

9 AM - Mandatory Sale meeting for all students (must wear official dress) with a selling project.(excludes only breeding animals) **If student does not attend this meeting they will be fined \$50.00**

10 AM - Presale ends, students must notify freezer sale table they have a buyer **BEFORE** this time or the animal will be on the list of projects to sell. It is the student's responsibility to sell their project.

*****If you get a buyer after this time, you must check with the freezer sale table to make sure your animal is not already sold.**

Saturday, February 10th

1 PM - Premium Sale

4 PM - Ag. Mechanics and Horticulture Silent Auction Close

*******It is the student's responsibility to deliver the project to the buyer.**

*******All student must be present to load their own animals, except for swine.**

8 PM - Barn closes and all project will be loaded on trailer or removed from the exhibit center.

Animal Removal

- Market animals may not be removed from the barn, on Thursday or Friday without a release form.
- Poultry and market rabbits will have to check out by the roll up door with their yellow release form before they may take their animals.
- No animals may be removed on Saturday until to conclusion of the premium sale. You must get a release form from your Ag. Teacher in order to be remove your animal.

After show items to complete.

- **Broilers, Turkeys, and Rabbits** must be processed within 7 days of the show. They must then be delivered to the buyer within 21 days.
 - A list of processors are in the LSA rulebook.
 - Ask the buyer how they would like them prepared, some want store bought.
- **Ag. Mechanic and Horticulture** Projects must be delivered within 2 weeks of the show.

After show items to complete

Pens at the barn must be cleaned and approved by your ag. Teacher, by Wednesday, February 14th at 6pm.

All wood must be taken out of the barn, DO NOT put it in the dumpsters!

CFISD Checklist **NEW FOR 2018** next slide - you will receive this from your Ag. Teacher the week after show.

Due by Monday, March 12th.

Checklist for Students upon Completion of Show

Exhibitor's Name: _____ School: _____

Project (circle one): Ag Mech Broiler Goat Heifer Horticulture Lamb Rabbit Royalty Steer Swine Turkey

Below is a checklist for all CFISD LSA projects. Once you have completed all requirements and obtained all necessary signatures please submit this paperwork to your ag teacher. These items must be completed, and your buyer(s) must have paid, before you can receive your check.

Signature	Date Completed	Item	Description
(Ag Teacher)		AET Journal Hours	- Students must enter two hours per month for the duration of the project
(Ag Teacher)		AET Finances	- Inventory for resale - Barn rent if applicable - Expenses - Cash Market Sale and donations
(Ag Teacher)		SAE Plan	- Description - Time Investment - Financial Investment - Capital Investment - Learning Objectives
(Ag Teacher)		Thank you cards	- Thank you notes must be written for all sold projects and donations/awards received. - Rough Draft must approved by ag teacher - Neatly written thank you note on CFISD Stationary (provided by your ag teacher) in an addressed, stamped and unsealed envelope returned to ag teacher
(Buyer) or Attach business card		Auction	- Students who made auction must hand deliver picture and thank you card to your the buyer and attach a business card
(Buyer)		Turkeys, Broiler, Rabbits, Ag Mechanics and Horticulture Exhibitors	- Rabbits and poultry must be processed within 7 days of the show and delivered to your buyer within 21 days following the show - Rabbit exhibitors must deliver 3 processed rabbits to their buyer - Broiler exhibitors must deliver 5 processed birds to their buyer - Turkey exhibitors must deliver 1 processed bird to their buyer - Horticulture and Ag Mechanics exhibitors must hand-deliver items to buyer

**Due by
March
12th**

If students need help with these items teachers will be available after school most days.

Thank you notes will be given out by the Ag. Teachers

This is only for students who make the premium auction

Questions about processing ask your teacher.

After show items to complete by

Record book information:

- Record book website is www.theaet.com
 - Your student should know their log in
 - Example: Name - Roni Sadler
 - Chapter Number: TX0376
 - Username - RSadler
 - Password should be the same, unless student has changed it.

Shaving and Poultry Picking

Wednesday & Thursday after school - Sign up for time slots after meeting.

- Steers
- Lambs
- Goats

Saturday - 7:30 am - Swine shaving, \$25, signed waiver.
- Swine raisers with poultry will need to go first.

Saturday - 9:00 am - Poultry Picking, meet at the Ag. Shop parking lot. We will then travel to each house and hold birds.

Questions??